

Hvrgui

Contents

- [Name](#)
- [Synopsis](#)
- [Description](#)
- [See Also](#)

Name

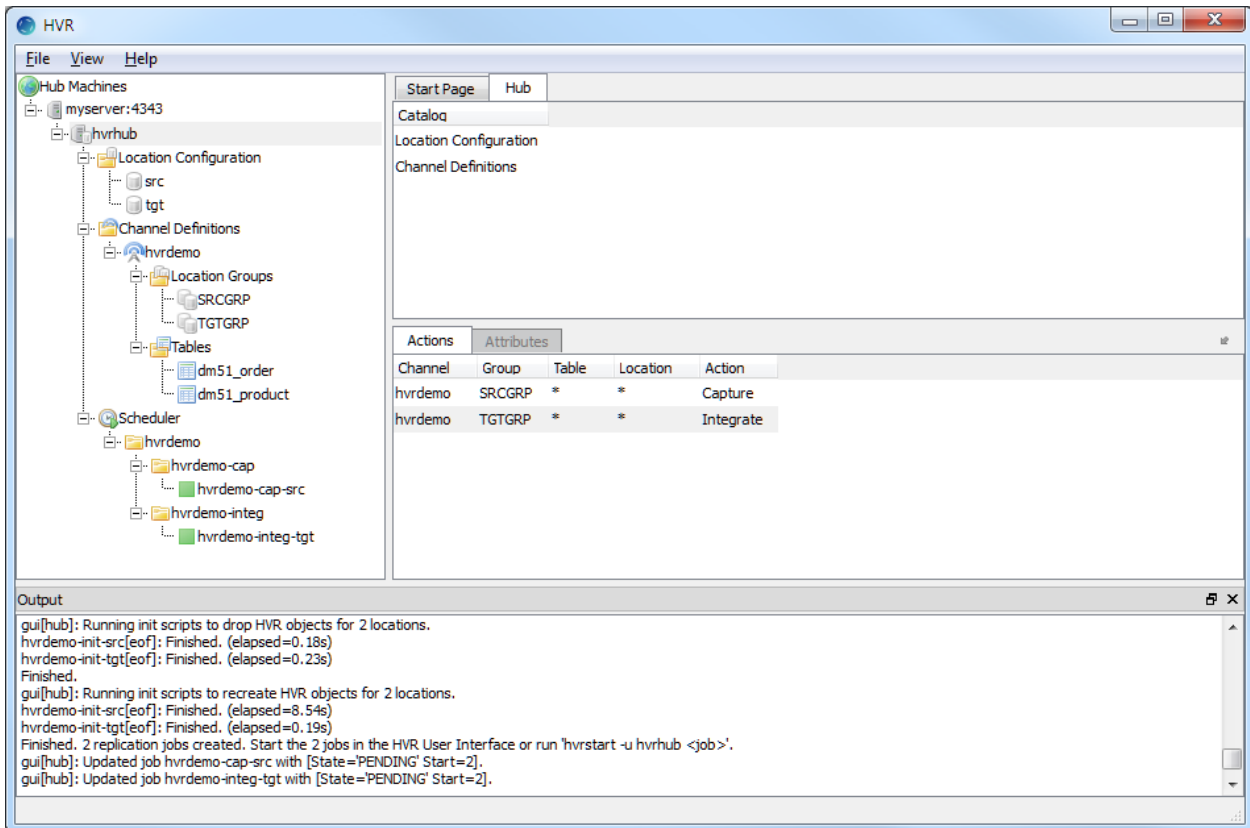
HVR GUI - HVR Graphical User Interface.

Synopsis

hvrgui

Description

HVR GUI is a Graphical User Interface used to configure replication. The GUI can just be run on the hub machine, but it can also run on the user's PC and connect to a remote hub machine. To start the GUI double-click on its Windows shortcut or execute command **hvrgui** on Linux. HVR GUI does not run on Unix machines; instead it must connect from the user's PC to such a hub machine.



The main window consists of a menu bar and four panes.

1. The top-left pane contains a treeview with hub(s), location(s), channel(s) and its definitions, and scheduler with its jobs.
2. The top-right pane displays details from the node selected in the treeview.
3. The **Actions** pane lists the HVR [actions](#) configured for the channel selected in the treeview. The **Attributes** pane displays the [attributes](#) of the scheduler jobs. This pane is enabled only when **Scheduler** or any node below scheduler is selected in the treeview.
4. The bottom pane displays the logfile and error information.

When HVR's GUI is launched for the first time **Register Hub** window is displayed automatically to input details required for connecting to the hub database. **Register Hub** can also be accessed from menu **File Register Hub**.

After registering a hub, you can see folders for **Location Configuration** and **Channel Definitions**. Right-clicking on these (or on the actual channels, locations, etc. under it) reveals a menu that allows you to do things like:

- Create a new instance of that object
- Perform commands like an **HVR Initialize, Export, Import**
- Create an action for that object

See Also

- [HVR GUI Tips and Tricks \(Knowledge Base Article\)](#)