

Hvrcatalogcreate, Hvrcatalogdrop

Contents

- [Name](#)
- [Synopsis](#)
- [Description](#)
- [Options](#)

Name

hvrcatalogcreate - Create catalog tables in hub database.

hvrcatalogdrop - Drop catalog tables from hub database.

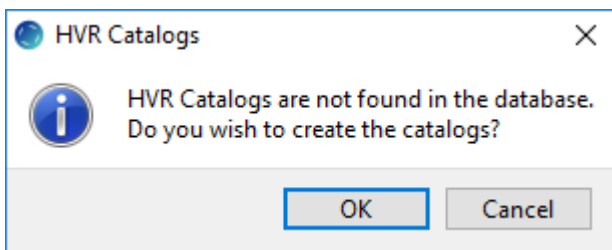
Synopsis

hvrcatalogcreate [*options*] *hubdb*

hvrcatalogdrop [*options*] *hubdb*

Description

Command **hvrcatalogcreate** allows you to create the [catalog tables](#) in hub database. This is equivalent to the **HVR Catalogs** dialog in the [HVR GUI](#) asking to create catalog tables in the HVR hub database. This prompt is displayed only if the catalog tables are not found in the hub database.



Command **hvrcatalogdrop** allows you to drop the [catalog tables](#) from hub database. Executing this command removes all locations, channels (including location groups and tables), and all actions defined on the channel or location. It is recommended to backup the catalogs (using [hvrcatalogexport](#)) before executing this command.

The argument *hubdb* specifies the connection to the hub database. For more information about supported hub databases and the syntax for using this argument, see [Calling HVR on the Command Line](#).

Options

This section lists and describes all options available for **hvrcatalogcreate** and **hvrcatalogdrop**.

Parameter	Description
-hclass	Location <i>class</i> of the hub database. Valid values for <i>class</i> are db2 , db2i , ingres , mysql , oracle , postgresql , sqlserver , or teradata . For more information, see Calling HVR on the Command Line .

-u *user[/pwd]*

Connect to hub database using DBMS account *user*. For some databases (e.g. SQL Server) a password must also be supplied.